

THERMIC PACKAGE BOILERS

THERMIC

'D' TYPE WOOD FIRED
STEAM BOILERS
WATER TUBE DESIGN



THERMIC INDUSTRIES PTY . LTD.

Factory 5, 17-19 Somerton Park Drive

Campbellfield 3061

Victoria Australia

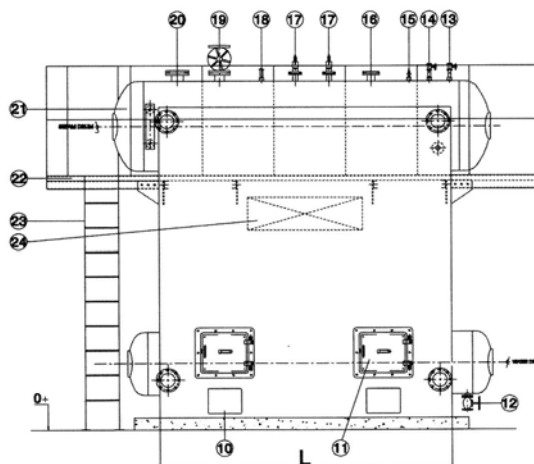
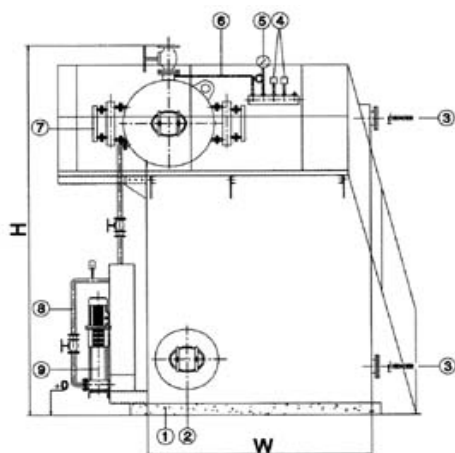
Email address: info@thermic.com.au

Tel: +61 3 9308 8880

Fax: +61 3 9308 8882

'D' TYPE WOOD FIRED WATER TUBE DESIGN

TECHNICAL DATA

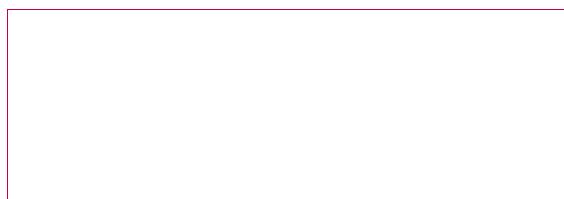


- | | |
|--|---|
| <ol style="list-style-type: none"> 1. Concrete Plinth 2. Water Drum 3. Header 4. Pressure Relay 5. Pressure Gauge 6. Steam Piping into Pressure Gauge 7. Water Level Gauge 8. Feed Water Piping 9. Feed Water Pump 10. Cinder Output Door 11. Wood Waste Input Door 12. Blowdown Valve | <ol style="list-style-type: none"> 13. Air Vent 14. Standby Steam Outlet 15. Water Level Limiter 16. Standby Steam Outlet 17. Safety Valve 18. Steam Piping into Pressure Gauge 19. Main Steam Valve 20. Standby Steam Outlet 21. Steam Drum 22. Platform 23. Ladder 24. Flue Exhaust |
|--|---|

MODEL "WS"	1000	1500	2000	2500	3000	4000
CAPACITY KW HP	600 60	1000 100	1300 130	1600 160	2000 200	2700 270
EVAPORATION KG/HR f & a 100°C	1000	1500	2000	2500	3000	4000
HEATING SURFACE M ²	41.5	62.5	81.6	103.8	125.9	163.1
CONSUMPTION OF WOOD WASTE (KG/HR)	180	210	280	350	420	560
MAIN STEAM OUTLET (MM)	60	76	76	90	90	114
FEEDWATER INLET (MM)	34	42	42	42	42	49
SAFETY VALVE (MM)	42	42	49	49	49	60
BLOWDOWN VALVE (MM)	42	42	42	49	49	49
FLUE DIAMETER (MM) Ø	320	340	360	400	420	480
DIMENSIONS						
OVERALL HEIGHT (MM) H	3450	3680	3850	3920	4150	4150
OVERALL WIDTH (MM) W	1500	1600	1800	1950	2200	2600
OVERALL LENGTH (MM) L	2750	2850	3000	3200	3400	3550

(CHECK WITH LOCAL AUTHORITIES IN COUNTRIES OTHER THAN AUSTRALIA)

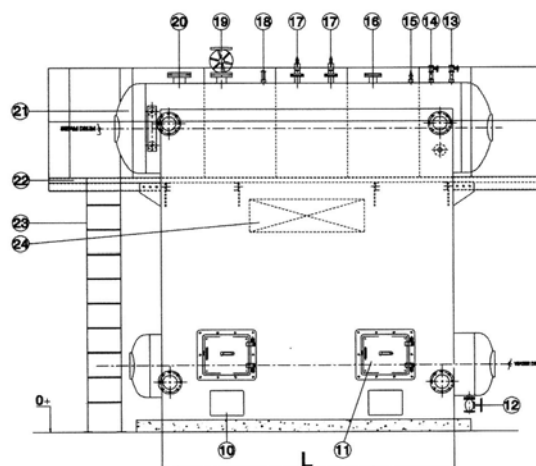
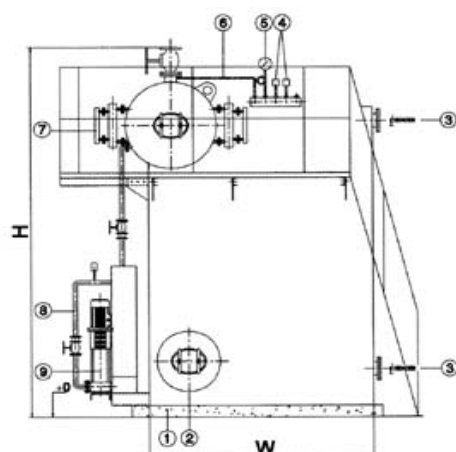
We reserve the right to alter specification without prior notice.



SPECIFICATION

'D' TYPE WOOD FIRED WATER TUBE DESIGN

TECHNICAL DATA

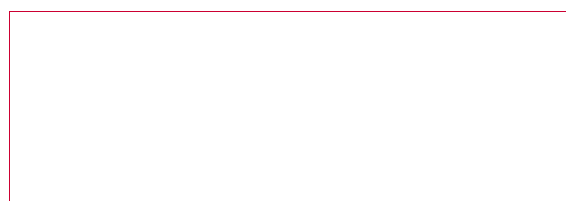


- | | |
|-------------------------------------|--------------------------------------|
| 1. Concrete Plinth | 13. Air Vent |
| 2. Water Drum | 14. Standby Steam Outlet |
| 3. Header | 15. Water Level Limiter |
| 4. Pressure Relay | 16. Standby Steam Outlet |
| 5. Pressure Gauge | 17. Safety Valve |
| 6. Steam Piping into Pressure Gauge | 18. Steam Piping into Pressure Gauge |
| 7. Water Level Gauge | 19. Main Steam Valve |
| 8. Feed Water Piping | 20. Standby Steam Outlet |
| 9. Feed Water Pump | 21. Steam Drum |
| 10. Cinder Output Door | 22. Platform |
| 11. Wood Waste Input Door | 23. Ladder |
| 12. Blowdown Valve | 24. Flue Exhaust |

MODEL "WS"	5000	6000	8000	10000	12000	15000
CAPACITY KW	3300	4000	4500	6600	8000	10000
HP	330	400	450	660	800	1000
EVAPORATION KG/HR f & a 100°C	5000	6000	8000	10000	12000	15000
HEATING SURFACE M ²	205.2	252	322	410	482	605
CONSUMPTION OF WASTE (KG/HR)	700	840	1120	1400	1680	2100
MAIN STEAM OUTLET (MM)	140	168	168	168	168	222
FEEDWATER INLET (MM)	49	49	60	60	60	60
SAFETY VALVE (MM)	60	60	60	60	76	76
BLOWDOWN VALVE (MM)	49	49	60	60	60	60
FLUE DIAMETER (MM) Ø	550	630	680	720	750	800
DIMENSIONS						
OVERALL HEIGHT (MM) H	4150	4150	4150	4150	4150	4150
OVERALL WIDTH (MM) W	2850	3000	3000	3000	3200	3400
OVERALL LENGTH (MM) L	3820	4200	5200	6000	7200	8500

(CHECK WITH LOCAL AUTHORITIES IN COUNTRIES
OTHER THAN AUSTRALIA)

We reserve the right to alter specification without prior notice.



'D' TYPE WOOD FIRED STEAM BOILERS WATER TUBE DESIGN

The Thermic Boiler is of a "D" type water tube design, conservatively designed tube layouts, coupled with a large top drum, provide superior natural circulation and operational characteristics.

Thermic Boiler's Quality

- Quality is our highest concern, our commitment to the principles of Quality as per ISO9001-2000.
- Our business objective is to adopt a process approach to enhance customer satisfaction, provide quality equipment and service with competitive price.
- We insist on thorough detailed inspections by external inspector on every unit we build to compliance with applicable codes.



Thermic's Boiler production inspected and witness by external inspector.

- Trained craftsmen work on especially designed equipment, producing boilers that are guaranteed to meet customer requirement and exact standards.
- Assembly at our plants in Campbellfield, Victoria to ensure total control over quality and production schedules.



Detail inspection during manufacture is performed on every aspect that goes into Thermic's Boiler.

Thermic Boiler's Capacity & Pressure

- Steam capacities from 1000kg/hr (2200 lbs/hr) to 32,000kg/hr (70,000 lbs/hr) are available shop assembled.
- Design pressures to 10,350kPag (1500psig) with steam temperature to 560°C (1050°F) available.



*M.E.S. PLANTS
Site: GOLDEN MANUFACTURERS
BOILA CIRCLE, KALABO INDUSTRIAL
ESTATE
NASINU, FIJI
1x 4MW Wood Waste Steam Boilers
Complete Packaged Steam Plant*